

← incolla sul retro del lato C

← piega

LATO A

← piega

LATO B

← piega

← piega

LATO C

incolla ↗

↖ incolla

↖ incolla

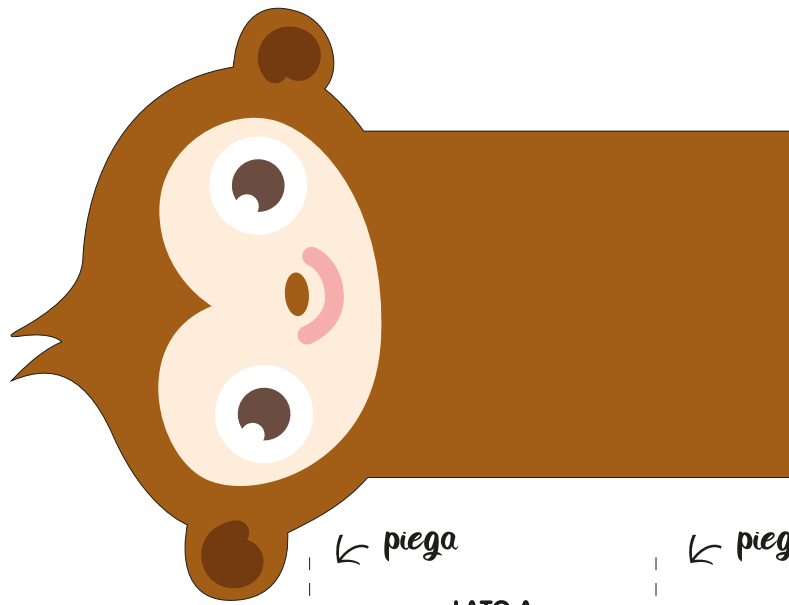
↖ incolla

↖ incolla



↖ zampine ↗

da incollare sui lati A e B



← incolla sul retro del lato C

← piega

← piega

← piega

← piega

LATO A

LATO B

LATO C

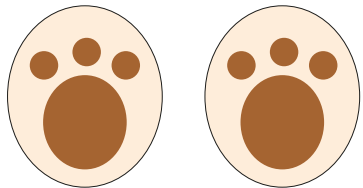
incolla ↗

↖ incolla

↖ incolla

↖ incolla

↖ incolla

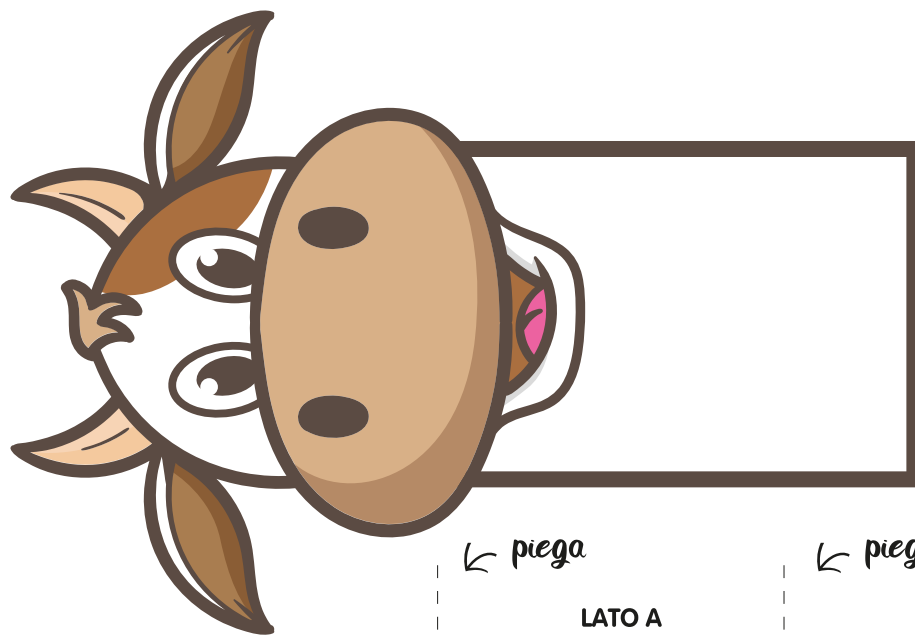


↖ zampine ↗

da incollare sui lati A e B

SCIMMI
www.fruttafrullata.it





← incolla sul retro del lato C

← piega

LATO A

← piega

LATO B

← piega

← piega

LATO C

incolla ↗

↖ incolla

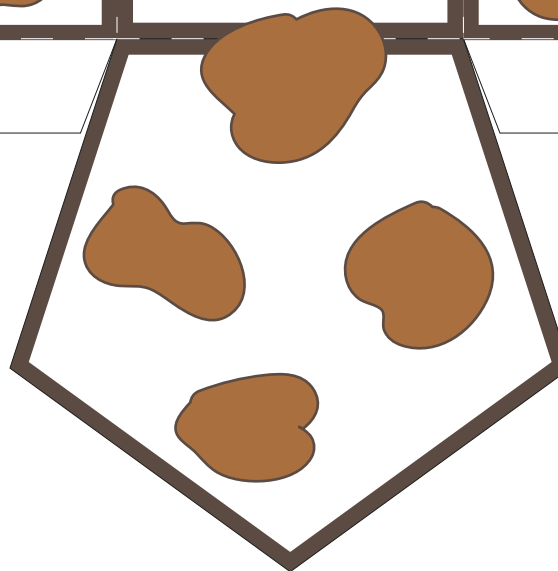
↖ incolla

↖ incolla

↖ incolla

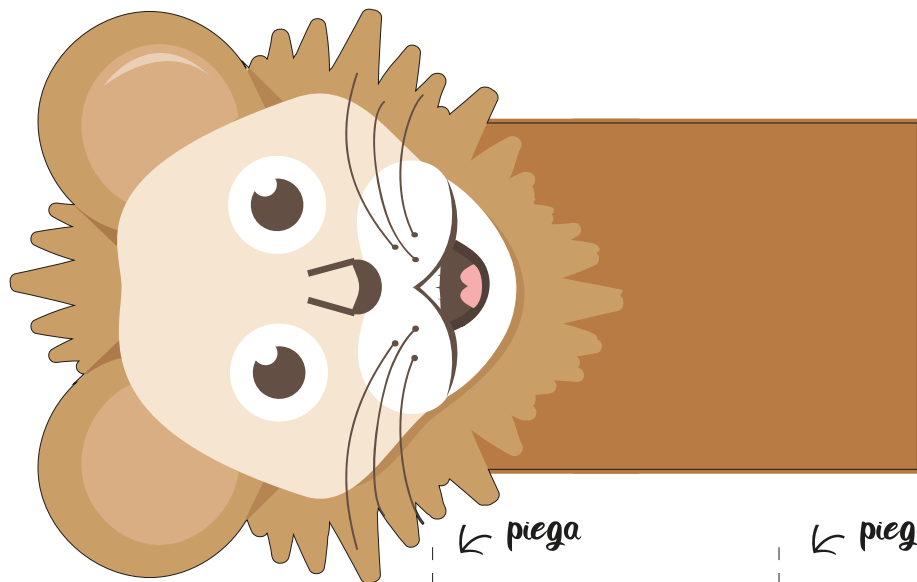


↖ zampine ↗
da incollare sui lati A e B



MU
www.fruttafrullata.it





← incolla sul retro del lato C

← piega

← piega

← piega

← piega

LATO A

LATO B

LATO C

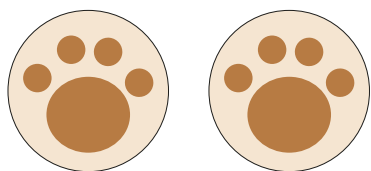
incolla ↗

↖ incolla

↖ incolla

↖ incolla

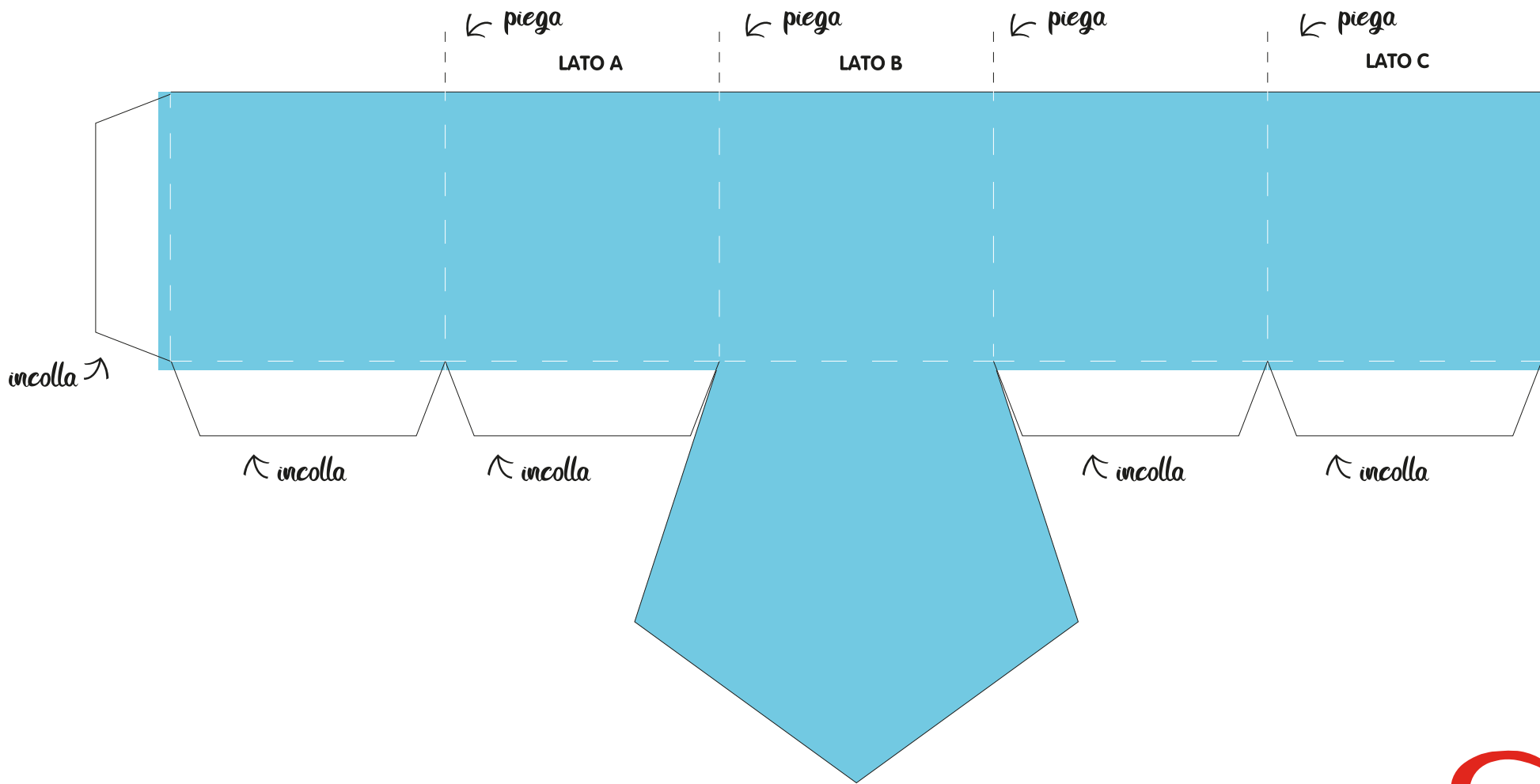
↖ incolla

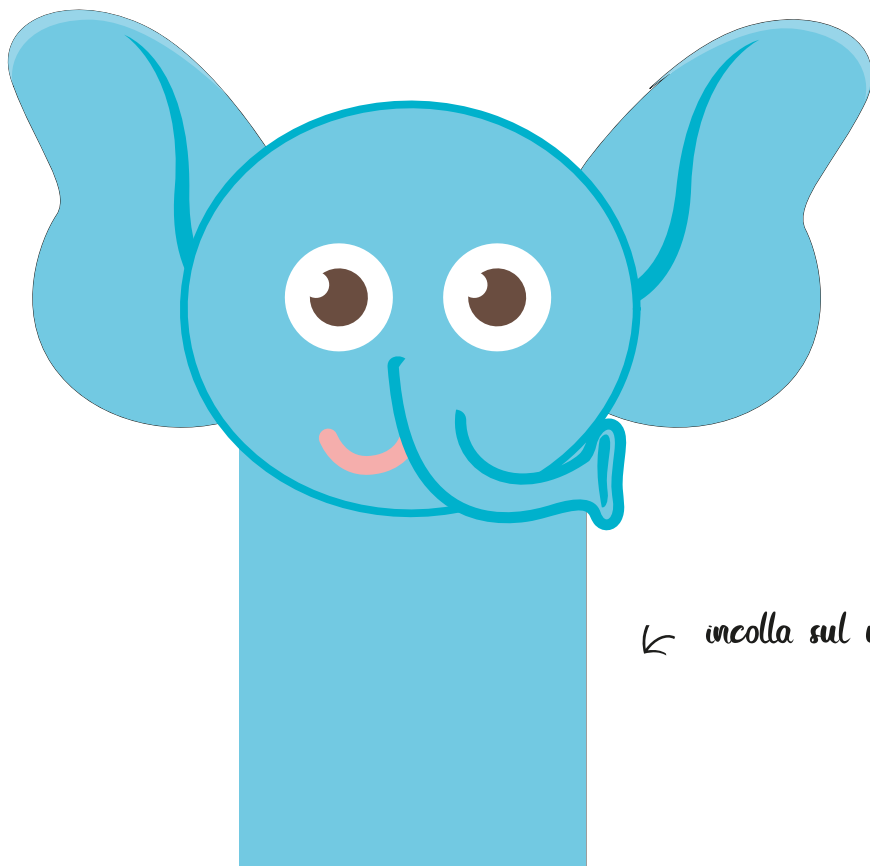


↖ zampine ↗
da incollare sui lati A e B

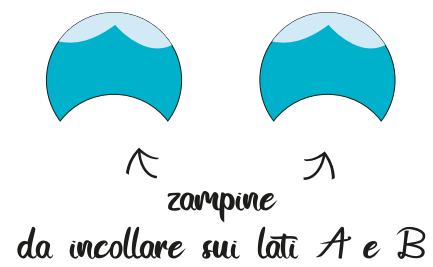
LEO
www.fruttafrullata.it







← incolla sul retro del lato C





← incolla sul retro del lato C

← piega

← piega

← piega

← piega

LATO A

LATO B

LATO C

incolla ↗

↖ incolla

↖ incolla

↖ incolla

↖ incolla

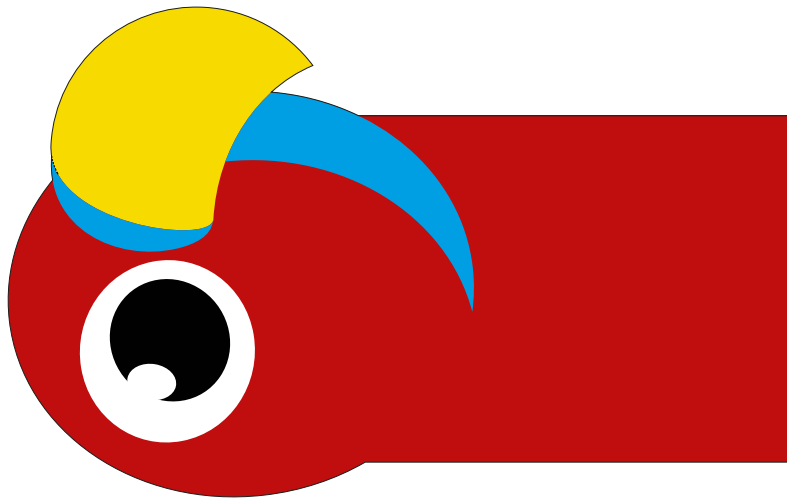


↖ zampine ↗

da incollare sui lati A e B

CAMA
www.fruttafrullata.it





← incolla sul retro del lato C

← piega

LATO A

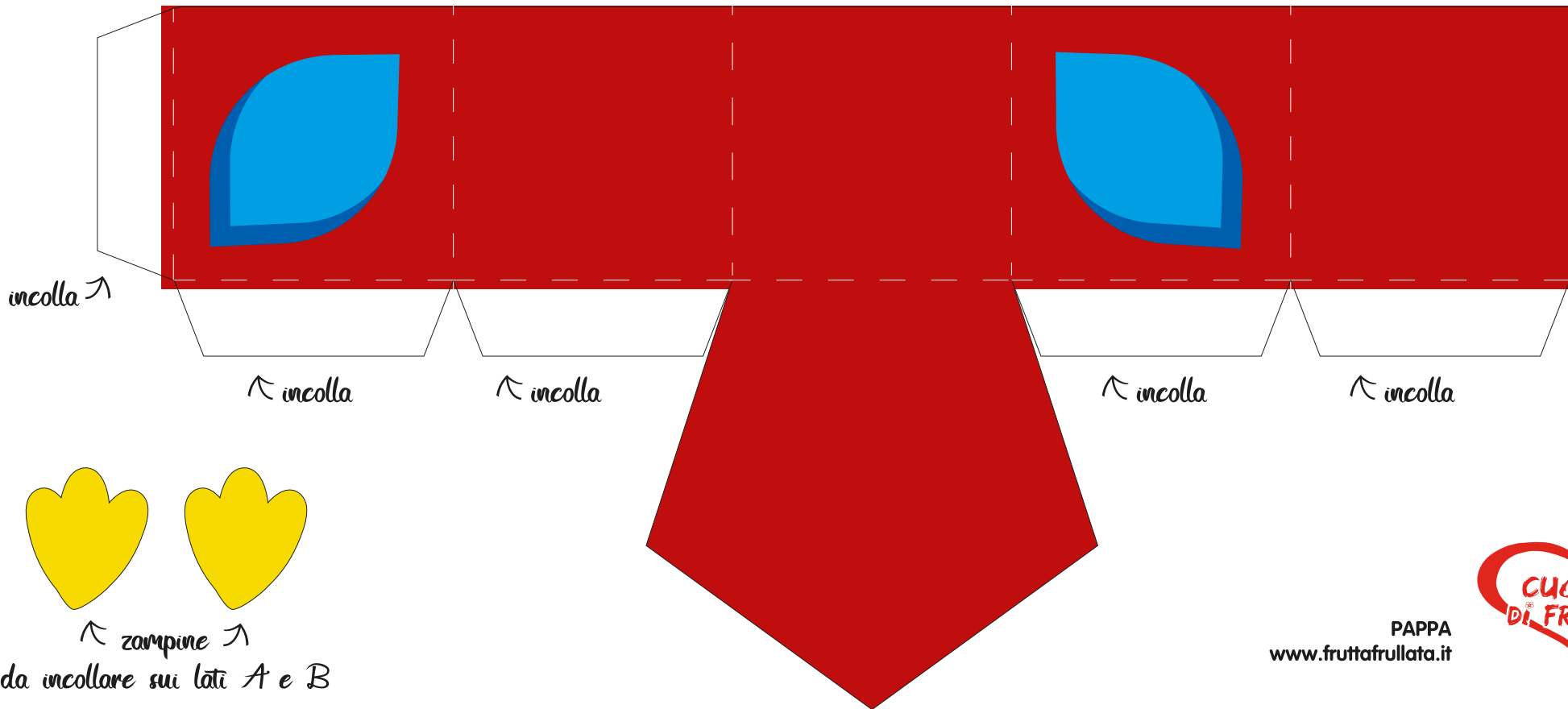
← piega

LATO B

← piega

← piega

LATO C



incolla ↗

↖ incolla

↖ incolla

↖ incolla

↖ incolla

↖ zampine ↗
da incollare sui lati A e B

PAPPA
www.fruttafrullata.it

